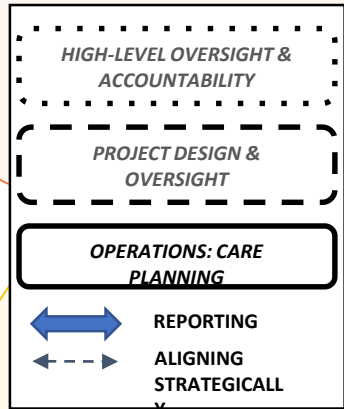


Governance Structure - Primary and Community Care Response Teams (PCCRT)

ETHP - Ontario Health Team (OHT)

Vision and direction to support external relationships, community engagement, resource allocation, quality & accountability



Integrated Home Care & Transitions Portfolio

Directing and aligning work within and across the ETHP portfolios

Other adult-focused ETHP Priority Population Portfolios including:

1. Infection Disease, Prevention, Chronic Disease Mngt
2. Palliative Care
3. Adult Substance Use and Health
4. Adult Mental Health

*PCCRT Steering Committee

Directing program specific planning, operations, and evaluation through collaborative governance, partnership development, shared accountability and collective advocacy within the system.

Data & Accountability Team

Supporting monthly & quarterly reporting

Implementation Team

Project Facilitator/Implementation Specialist

Supporting Groups

Working with a QI lens

Administrative Team

Managing referral/care planning system & supporting response team operations

Operations Committee*

Supporting development of tools/process to support operations, engagement and evaluation

Clinical Leads

Planning, advising, and/or supporting implementation of strategies involving primary care

Primary and Community Care Response Teams (PCCRT)

Supporting integrated care planning & providing feedback to support QI

Primary and Community Care Response Teams (PCCRT)

**PCCRT 1
(West ETHP)**

**PCCRT 2
(East ETHP)**

**SMHC
(Senior Mental Health Collaborative)**

*At least 6-8 community advisors (3-4 on steering committee and 3-4 on operations committee)